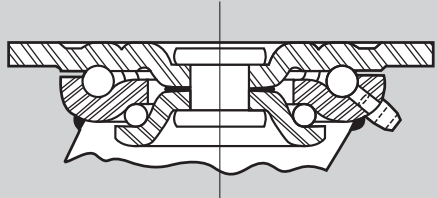


SERIES 1 MEDIUM DUTY

Capacities to 600 lbs.

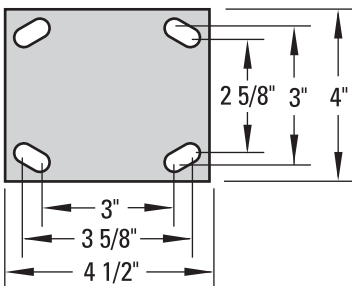
Standard Features

- **Swivel Casters** - Formed legs are continuously welded, top plate is cold forged from $\frac{1}{4}$ " steel and heat treated to relieve stress and add strength



- **Main Load Bearing** - Fully hardened $\frac{5}{16}$ " diameter ball bearings in a hardened raceway provide top performance under maximum rated loads
- **Thrust Bearing** - Large diameter, hardened ball bearings roll freely in a hardened raceway
- **King Pin** - Coined and stress relieved king pin holds raceways precisely in alignment
- **Wheel Bearings** - Roller bearing, or Delrin bearings are available when required
- **Lube Fittings** - Provided for both swivel and wheel bearings when required
- **Finish** - Zinc finish is standard

Standard Top Plate



APPLICATION:

A good choice where application requires a basic wheel material and capacities of 600 lbs. or less.

The 3 $\frac{1}{4}$ " wheel models are particularly well suited for applications where a high capacity is required with an extremely low overall height.



S141R-MR

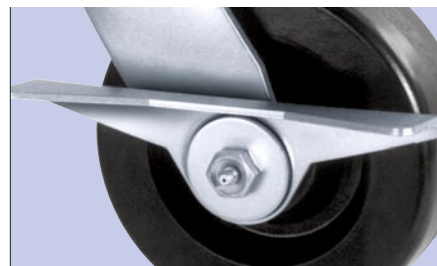


R141R-SS

Optional Features

- **4 Position Swivel Lock** - (Suffix -SL)
- **Delrin Bearing** - (Change R to D)
Example: S141D-PH
- **Wheel Brake, Cam Style** - (Suffix -WB)

Cam Style Brake



4 Position Swivel Lock



Wheel Specifications						Caster Specifications						Part Number	
Dia. "A" Inches (mm)	Tread Inches (mm)	Wheel Composition	Ref. to Page	Bearing Type	Axle Dia. Inches (mm)	Load Capacity lbs. (KGS)	Overall Height "B" Inches (mm)	Swivel Radius Inches (mm)	Attach. Bolt Inches (mm)	Approx. Shipping Wt.		Swivel Caster	Rigid Caster
										Swivel lbs. (KGS)	Rigid lbs. (KGS)		
3 1/4 (83)	1 1/2 (38)	Cast Iron	86	Roller	1/2 (13)	600 (270)	4 1/4 (108)	1 3/4 (44)	3/8 (10)	4.5 (2.0)	4.0 (1.8)	S131R-SS	R131R-SS
		Phenolic	82	Roller		600 (270)				3.0 (1.4)	2.5 (1.13)	S131R-PH	R131R-PH
		Mold-on Rubber (Cast Iron Core)	74	Roller		240 (108)				4.5 (2.0)	4.0 (2.8)	S131R-MR	R131R-MR
		Polyurethane (Cast Iron Core)	78	Roller		500 (225)				4.5 (2.0)	4.0 (1.8)	S131R-PI	R131R-PI
4 (102)	1 1/2 (38)	Cast Iron	86	Roller	1/2 (13)	550 (248)	5 5/8 (143)	3 5/8 (92)	3/8 (10)	5.0 (2.3)	4.5 (2.0)	S141R-SS	R141R-SS
		Phenolic	82	Roller		600 (270)				3.5 (1.6)	3.0 (1.4)	S141R-PH	R141R-PH
		Mold-on Rubber	74	Roller		250 (113)				5.0 (2.3)	4.5 (2.0)	S141R-MR	R141R-MR
		Polyurethane (Cast Iron Core)	78	Roller		400 (180)				5.0 (2.3)	4.5 (2.0)	S141R-PI	R141R-PI
		Polyolefin (Blk)	81	Roller		400 (180)				3.5 (1.6)	3.0 (1.4)	S141R-PB	R141R-PB
		Polyolefin (Wt)	81	Delrin		350 (157)				3.5 (1.6)	3.0 (1.4)	S141D-PW	R141D-PW
5 (127)	1 1/2 (38)	Cast Iron	86	Roller	1/2 (13)	600 (270)	6 1/2 (165)	4 1/2 (108)	3/8 (10)	5.5 (2.5)	5.0 (2.3)	S151R-SS	R151R-SS
		Phenolic	82	Roller		600 (270)				4.0 (1.8)	3.5 (1.6)	S151R-PH	R151R-PH
		Mold-on Rubber (Cast Iron Core)	74	Roller		250 (113)				5.5 (2.5)	5.0 (2.3)	S151R-MR	R151R-MR
		Polyurethane (Cast Iron Core)	78	Roller		450 (202)				5.5 (2.5)	5.0 (2.3)	S151R-PI	R151R-PI
		Polyolefin (Blk)	81	Roller		450 (202)				4.0 (1.8)	3.5 (1.6)	S151R-PB	R151R-PB
		Polyolefin (Wt)	81	Delrin		400 (180)				4.0 (1.8)	3.5 (1.6)	S151D-PW	R151D-PW
6 (152)	1 1/2 (38)	Cast Iron	86	Roller	1/2 (13)	600 (270)	7 1/2 (191)	5 (127)	3/8 (10)	6.5 (2.9)	6.0 (2.7)	S161R-SS	R161R-SS
		Phenolic	82	Roller		600 (270)				5.5 (2.5)	5.0 (2.3)	S161R-PH	R161R-PH
		Mold-on Rubber (Cast Iron Core)	74	Roller		300 (135)				6.5 (2.9)	6.0 (2.7)	S161R-MR	R161R-MR
		Polyurethane (Cast Iron Core)	78	Roller		550 (248)				6.5 (2.9)	6.0 (2.7)	S161R-PI	R161R-PI
		Polyolefin (Blk)	81	Roller		450 (202)				5.5 (2.5)	5.0 (2.3)	S161R-PB	R161R-PB
		Polyolefin (Wt)	81	Delrin		400 (180)				5.5 (2.5)	5.0 (2.3)	S161D-PW	R161D-PW

